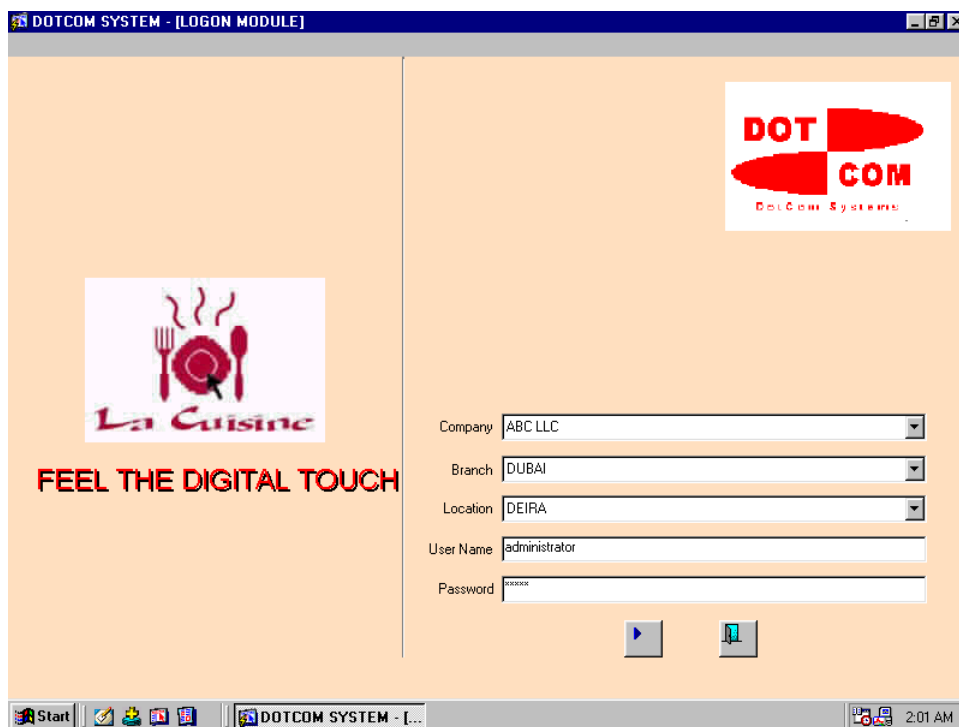
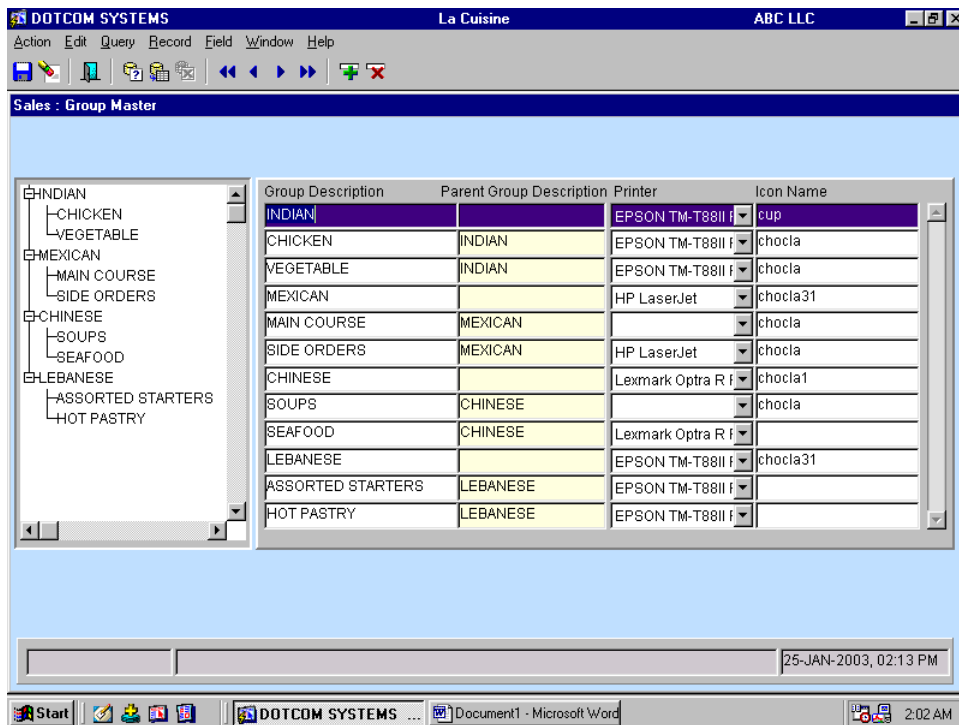


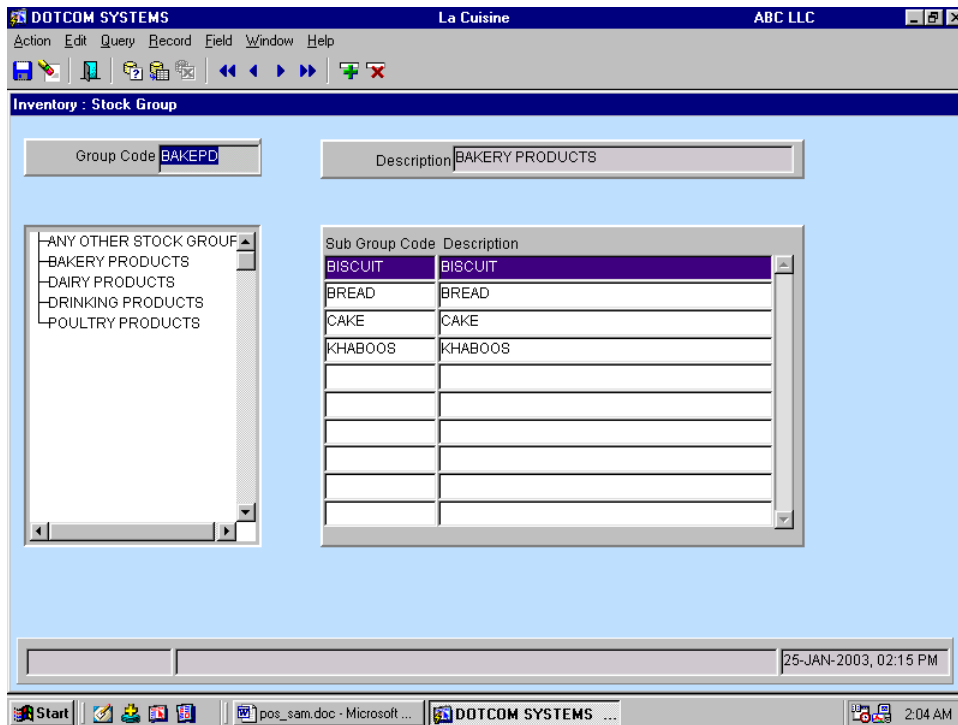
## La Cuisine (Point of Sale System)

### About the Software:

- ⇒ La Cuisine is a comprehensive Catering Management System, developed by Dotcom Systems.
- ⇒ The System is designed to cater to the day to day activities such as sales, Food, Costing, Inventory Control and recipe preparation for any type of Restaurant, Fast food outlets and Ice cream café.
- ⇒ La Cuisine is developed in Oracle 8 RDBMS, the strongest Database thus ensuring your investment in time and money on software is secure.
- ⇒ It has graphical user interface capabilities under Microsoft Windows environment.
- ⇒ It uses open PC and networking architecture and provides central control of management.

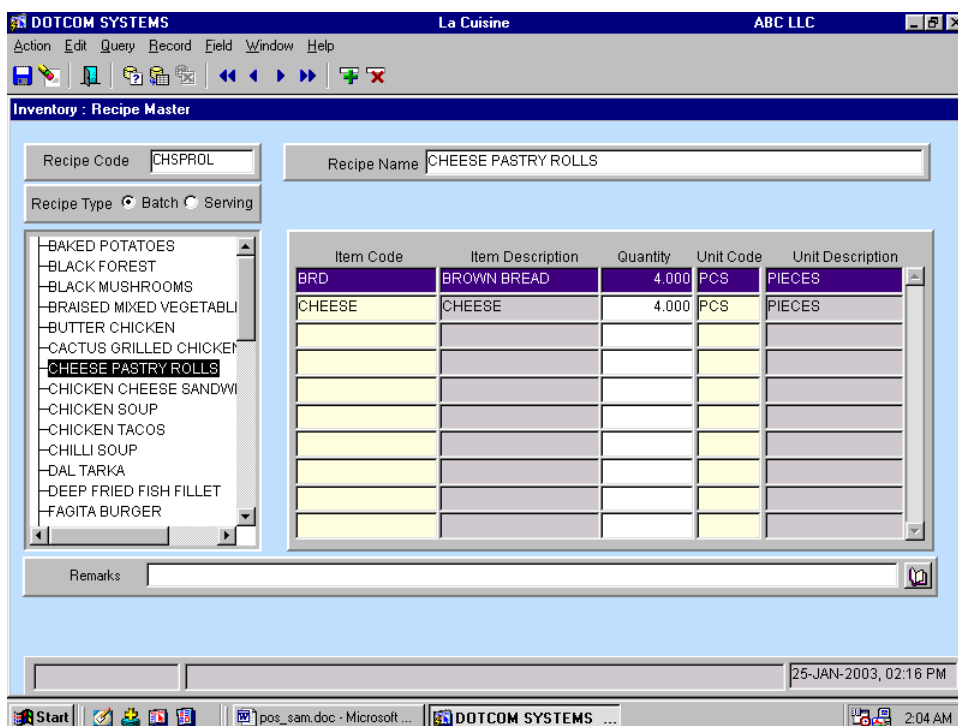






**RECIPE MANAGEMENT:**

- ⇒ Flexibility to deplete inventory items that are used in batch recipes.
- ⇒ Integrated recipe costing.
- ⇒ Constructs recipes by menu items.
- ⇒ Unlimited ingredients per recipes.



**Point - of - Sale Logon**

Company

Branch

Location

Point of Sale ABC LLC

*La Cuisine*

Developed by Dotcom Systems, Dubai, UAE

**DOT COM**  
Dotcom Systems

Please swipe your card to logon | Logged out

  
**La Cuisine**  
FEEL THE DIGITAL TOUCH

™Registered Trade Mark of NTDE Group



#### **INVENTORY MANAGEMENT:**

- ⇒ Performs basic stock control transactions, setup, system manager and various reports for stock analysis and control.
- ⇒ Provision to use multiple units of measurement for an item.
- ⇒ Option to print stock sheets for selected items.
- ⇒ Options to check the current stock on hand for selected inventory items.
- ⇒ Store receipts.
- ⇒ Stock adjustments.



**POINT OF SALE:**

- ⇒ Performs daily tasks of restaurant operations- Basic POS operations to perform sales, cash drawer tasks, automatic shift change etc.
- ⇒ Provisions for selling items which are not falling in any menu (Open food and Open beverages).
- ⇒ Provision to use separate printers for counter and the table.
- ⇒ Flexibility of moving a customer from one table to another.
- ⇒ Option of splitting an order into two or more.
- ⇒ Access controlled by magnetic swipe cards.
- ⇒ Combine / Split checks settlement.

